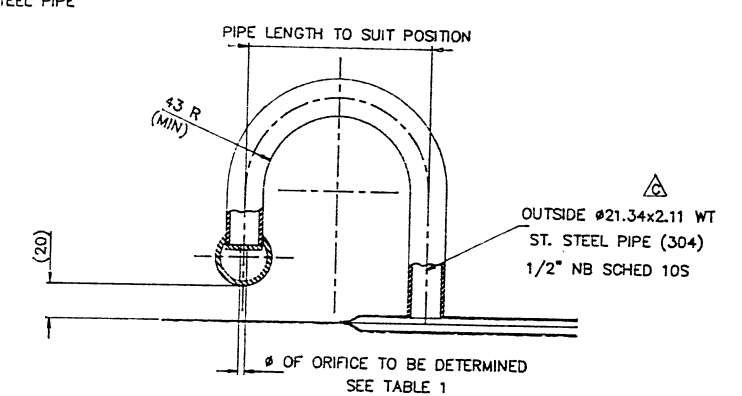
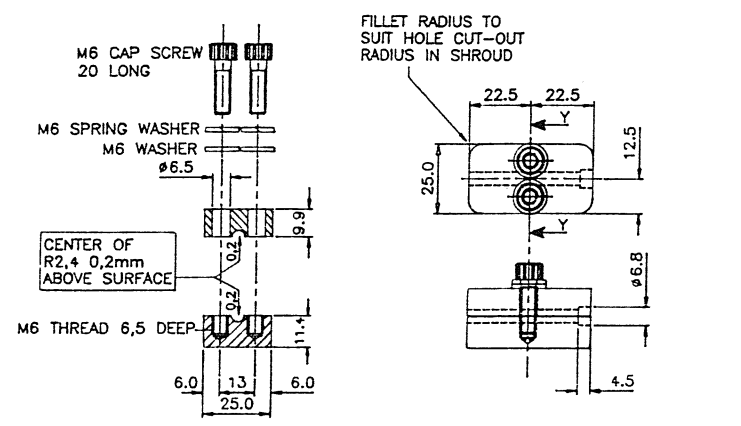


DETAIL "A"  
SCALE 1:1  
MATERIAL: 50x50x5 ST STL ANGLE

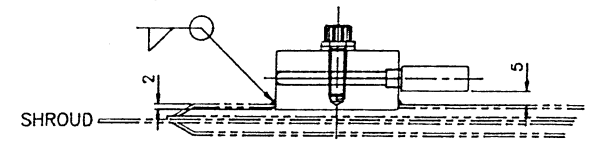
*M6 Bolts & Nut.*



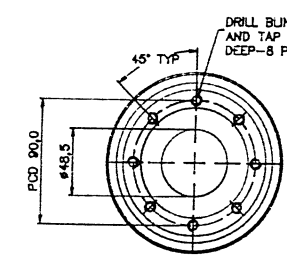
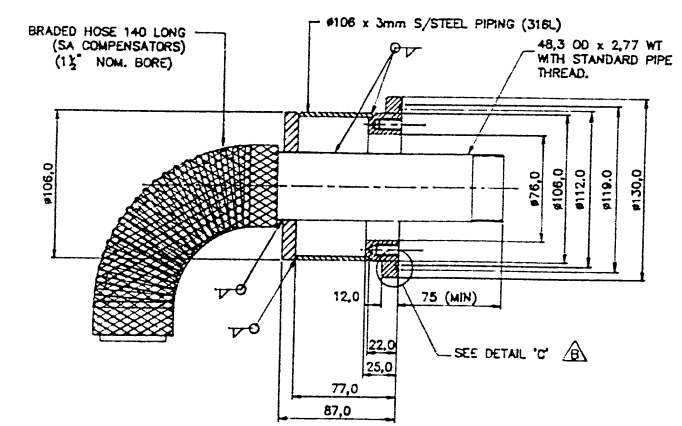
SECTION "D-D"  
SCALE 1:2



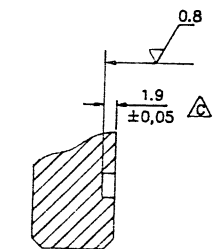
SECTION Y-Y



TYP PROBE MOUNTING BRACKET



DETAIL "B"  
NOT TO SCALE  
TYPICAL 2 PLACES



DETAIL "C"  
SCALE 2:1

NOTES (UNLESS OTHERWISE STATED)			
1) REMOVE ALL BURRS & SHARP EDGES TO 0.5x45° MAX.	4) ALL INTERNAL RADI 0.3 MAX.	MATERIAL:	GENERAL TOLERANCES:
2) SCREW THREADS TO ISO 261		STAINLESS STEEL 304	X ±0.5
3) SURFACE TEXTURE: (Ra TO ISO 1302)			XX ±0.2
			XXX ±0.05
			ANGLES ±1°

PROBE +; SHROUD REDESIGN; 1.85-1.9	C	-	WB				92-06-05	
SEAL GROOVE +	B	-	WB				92-03-23	TO SABS 0111
	A	-	WB				92-02-21	DISC NO/FILE NAME
REVISION DETAILS	ISS	C/NOTE	DRAWN	CHECK	APPR	P.OFF.	DATE	VTFM-10C

DRAWING STATUS	ACTIVE	SIGN	DATE
INFORMATION ONLY			
FOR 3rd. PARTY APPROVAL			
PERMIT MATERIAL ORDER			
FOR MANUFACTURE			
AS BUILT			
SUPERSEDED			

TITLE : SHROUD LID	ISSUE	A	B	C					
DRG NO : VTFM-12200-122	SHT	1	OF	1					
SCALE : 1:5	WHEN PLOTTED ON								A1
	UNLESS OTHERWISE STATED								